

## New equipment report



### POWER-MIX MODEL L46

- **Strong vibrating Action**, for test tubes 7 mm diam. up to 35 mm
- Both, "Press-to-Mix" action and "continuous" action are provided
- Stepless speedcontrol, up to maximum speed 2500 rpm
- Strong and steady unit
- Lined out for accessory adaption as described below
- Supplied with line-cord and standard cup
- Voltage requirements 230 Volts 50/60 Hz.  
115 Volts 50/60 Hz.
- Powerconsumption 40 Watts
- Dimensions: 135 x 120 x 135mm (LxDxH)
- Weight: 3,2 kg

ORDERING: CAT.NO. 46000 (220V50/60Hz)  
46010 (115V50/60Hz)

### A COMPLETE MIXER-LINE FROM ONE BASIC UNIT



## Order basic model L46 together with additional accessories below



### A COMPLETE MIXER-LINE FROM ONE BASIS UNIT

- |   |  |
|---|--|
| <p><b>A</b> MICRO-TITRE-PLATE-HOLDER</p> <p>Ordering number 46100</p>                               | <p>easy adaptable holder for one 96-well micro-titre-plate shaking with Model L46</p>                  |
| <p><b>B</b> MINI-REACTION-TUBE-HOLDER</p> <p>Ordering number 46200</p>                              | <p>easy adaptable holder for 20 mini-reaction-tubes; including polythene-foam holder</p>               |
| <p><b>b1</b> Spare polythene-foam-holder for 20 mini-reacton-tubes</p> <p>Ordering number 46250</p> |  |
| <p><b>C</b> One-position TEST-TUBE-HOLDER</p> <p>Ordering number 46300</p>                          | <p>easy adaptable holder for a single test-tube (max. 20x200 mm) including aluminum rod (M10)</p>      |
| <p><b>D</b> Multi-position TEST-TUBE-HOLDER</p> <p>Ordering number 46400</p>                        | <p>easy adaptable holder for up to 7 test-tubes (18x115mm) (max) Changing while mixing is possible</p> |
| <p><b>E</b> Universal CONTACT-PLATE</p> <p>Ordering number 46500</p>                                | <p>easy adaptable universal contact-plate for touching and mixing up to 6 tubes at once</p>            |

# NEW EQUIPMENT REPORT

## Hotplate Magnetic Stirrers



### Economy Hotplate Stirrers L-81

- Stirring motors: are of the AC-motors type
- Temperature regulated with bulbthermostat
- Air circulation: provided through the housing

### Standard/Large Hotplate Stirrers L 82 LD-83

- **Stainless Steel Reflectors:** withstand heat transfer from the hotplaces to the housing
- **Bi-metallic, over-heating protection:** operates independent, shuts off heating at 350°C
- **Hotplate Temperature:** regulated (50-325°C) through thermocouple, directly on the hotplace
- **"HOT" plate indication:** red indication-led shows the hotplate-temperature rised above 50°C
- **Thermometer connection:** DIN 5-pins 270°

### "Large capacity" models LD-83

- **Stirring motors:** are of the EC-Motors type which are brushless electronical DC-motors
- **Closed Housing:** withstands inside circulation of hazardous gasses/air (protects electronics)
- **Large Stirring Capacity:** up to 20 ltr.

### Aluminium HOTPLATE

- 150 mm diameter
- 600 Watt
- Temperature range 50 - 325°C
- Speed-Range 50 - 1250 rpm

Economy Model L-81 Capacity: 5 ltr
Standard Model L-82 Capacity: 10 ltr.
Large Capacity Model LD-83 Capacity: 20 ltr.

- **Housing:** two-pieces housing, composed of a pressure moulded metal (aluminum) tophousing and a thermo-vacuum formed plastic (ABS) bottom
- **Coating:** electrostatically applied powder coating; to be excellent corrosion resistant and strong
- **M-10 threaded support rod connection** is available for thermometer support



### Electronic Contact-Thermometer Model LD-80

For use with Models L-82 and LD-83 HOTPLATE STIRRERS, including Pt-1000-probe (ø 3 mm, L = 225 mm) and factory callibration certificate.

Output open collector.  
DIN connector 5 pin 270°.  
Range -50- + 300°C.

Ordering: cat. no. 80.000  
(with stainless steel probe)  
cat. no. 80.100  
(with glass probe).

### Support Rod Model L-809

Complete set for thermometer support, including rod, clamb and extention for use with beakers larger then 5 ltr.

Ordering: cat. no. 80.900.

### LABINCO B.V.

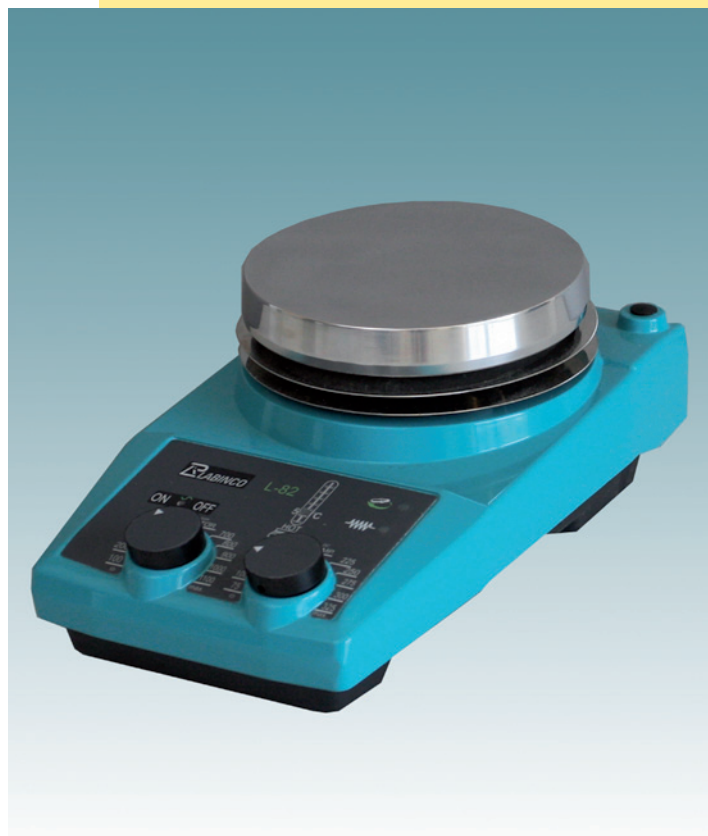
P.O. BOX 3259 - 4800 DG Breda, The Netherlands

Zinkstraat 64 - 4823 AC Breda, The Netherlands

Tel.: 0031(0)76 - 5417582, Fax: 0031(0)76 - 5420173

E-mail: info@labinco-bv.com - Internet: www.labinco-bv.com

# Hotplate Magnetic Stirrers (ordering)



Model	Model L-81	Model L-82	Model LD-83
Cat. number	81000	82000	83000
Description	Economy Hotplate Stirrer	Standard Hotplate Stirrer	Large Hotplate Stirrer
Stirrer capacity	5 ltr.	10 ltr.	20 ltr.
Motor rating in/out	22/2,2 W	22,2/2 W	13/5 W
Speed range	50-1250 rpm		
Heating surface	145 mm diam.		
Heating power	600 watt		
Hotplate material	ALSI 12		
Temperature-range	50-325° C		
Setting accuracy	+/- 15	+/- 3° C	
Electronic thermometer	N/A	LD-80	
Accuracy with sensor	N/A	+/- 0,5° K	
Fixed safety (undep.)	N/A	350° C	
"Hot" indication LED	N/A	50° C	
Weight	2,8 kg		
Dimensions (wxdxh)	172 x 286 x 125 mm		
Permissible ambient	5 - 40° C		
Permissible humidity	80%		
Protection class	IP 42		
Voltage/Frequency	230V/50 Hz		

**PTFE - chemical resistant topplate**



**Stainless steel topplate**



# Rock'n Rollers

## Available in two models:

- **Single Speed Model L-201**
- **Single Regulated Model L-202**

## Both models provide:

- Gentle rocking while rolling, to keep samples in motion
- Rocking movement 35 degr.
- 14 stainless steel rotating bars 208 x 10 mm diam.
- Heart to heart distance of tubes 19,5 mm



## Single-speed Rock'n roller Model L-201

- Roller speed: 10 rpm
- Rocking-frequency: 5 Cy/min
- Dimensions: 320 x 310 x 190 mm
- Weight: 3,6 kg

### Ordering:

230V 50/60Hz. Cat.no. 20100  
115 V 50/60Hz. Cat.no. 20110



## Variable-speed Rock'n roller Model L-202

- Rolling Speed: from 5 to 25 rpm
- Extension Cable: 2 m for in-cabinet use
- Rocking-frequency: 2,5 to 12,5 Cy/min
- Temperature Range:  
in cooler or incubator 2 - 50°C
- Basic Unit:  
Dimensions: 320 x 310 x 190 mm  
Weight 3,6 kg
- Controller:  
Dimensions: 150 x 190 x 75 mm  
Weight 1,2 kg

### Ordering:

230V 50/60Hz. Cat.no. 20200  
115 V 50/60Hz. Cat.no. 20210

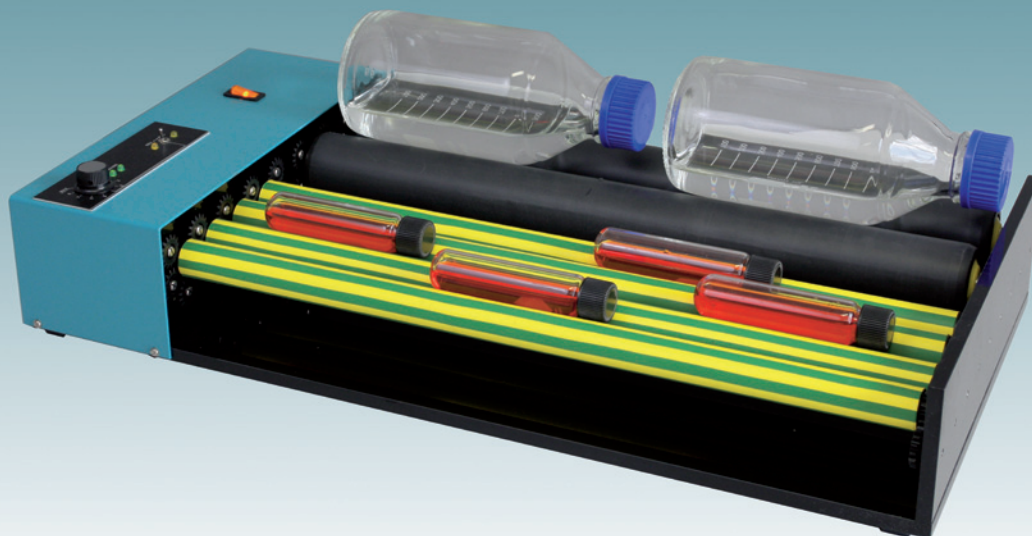


## LABINCO B.V.

P.O. BOX 3259 - 4800 DG Breda, The Netherlands  
Zinkstraat 64 - 4823 AC Breda, The Netherlands  
Tel.: 0031(0)76 - 5417582, Fax: 0031(0)76 - 5420173  
E-mail: info@labinco-bv.com - Internet: www.labinco-bv.com

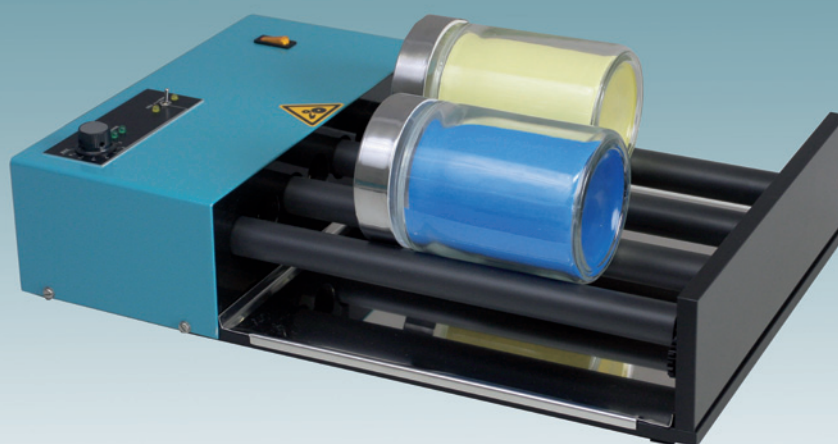
# Rolling Benches

## Model L206 - 209



Model	Cat. Number	Description	Dimensions	Weight
L-206	20600	<b>Rolling Bench Small</b> With 4 rolls of 320 mm Speed 5 - 50 rpm (Other on request) Maximal rolls 8 pc	D 500 mm W 350 mm H 110 mm	7,6 kg
L-209	20900	<b>Rolling Bench Standard</b> With 4 rolls of 470 mm Speed 5 - 50 rpm (Other on request) Maximal rolls 8 pc	D 650 mm W 350 mm H 110 mm	8,6 kg

## Model L206S - 209S



Same as above, but with stainless steel rolls  $\varnothing$  50 mm with ball bearings

# NEW EQUIPMENT REPORT

## Test - Tube - Rotators



### Model - L28

50/60 Hz Cat.No.: 28000 (230V) / 28010 (115V)

- For mixing, diffusion, dialysing, extraction etc.
- SPEED 10 rpm With strong, geared motor
- Angle of rotation can be set between 90° and 27°
- Tubes may be exchanged while rotator is running
- Comes with line-cord, but without disks
- Dimensions: 210(l) x 200(d) x 220(h). Weight: 2,6 kg



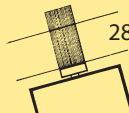
### Variable-speed Model - L29

50/60 Hz Cat.No.: 29000 (230V) / 29010 (115V)

- Same as L-28 but variable speed 5 to 50 rpm
- Dimensions: 210(l) x 200(d) x 270(h)  
Weight: 3,6 kg. (without disk)
- Angle of rotation can be set between 90° and 27°
- Tubes may be exchanged while rotator is running
- Comes with line-cord, but without disks



Accessory  
for tubes  
Cat.No.: 28085

Rotating disks for mini-reaction vials/tubes				For test tubes		
catalog number	number clamps	tube ø range	volume ml	catalog number	number clamps	tube ø range
28006	40	4-6	0,4	28020	20	12-16
28009	30	6-9	0,5	28030	20	16-19
28012	20	9-12	1,5	28032	10	28-32
 28090	adapter for dual disk support			28040	10	32-40
				28050	15	22-25
				28070	17	19-22
				28080	12	25-28



#### LABINCO B.V.

P.O. BOX 3259 - 4800 DG Breda, The Netherlands

Zinkstraat 64 - 4823 AC Breda, The Netherlands

Tel.: 0031(0)76 - 5417582, Fax: 0031(0)76 - 5420173

E-mail: info@labinco-bv.com - Internet: www.labinco-bv.com

# Model LD 79 Test-tube-rotator

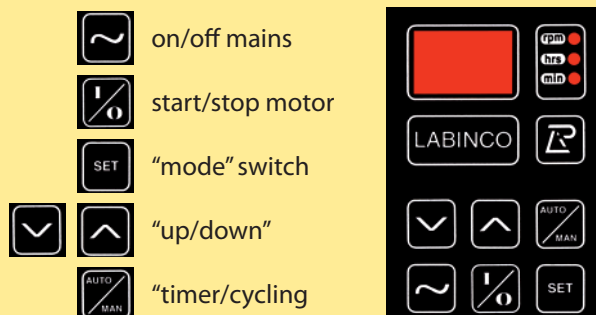


- Provides mixing for diffusion, dialysing, extraction etc.
- Tube diameter range 4 - 40 mm
- Accepts all disks mentioned in the listing on front page
- Mixing action can be setted by:
  - speed control 5-50 rpm
  - angle of rotation 90° to 27°
- Quick/easy exchange of disks by unscrewing central nut
- Dual or triple disk support may be carried out
- Tubes may be exchanged while the rotator is running
- Dimensions:  
200(l) x 200(w) x 250(h) mm
- Weight 3,5 kg

50/60 Hz Cat.No.: 79000 (230V) / 79010 (115V)

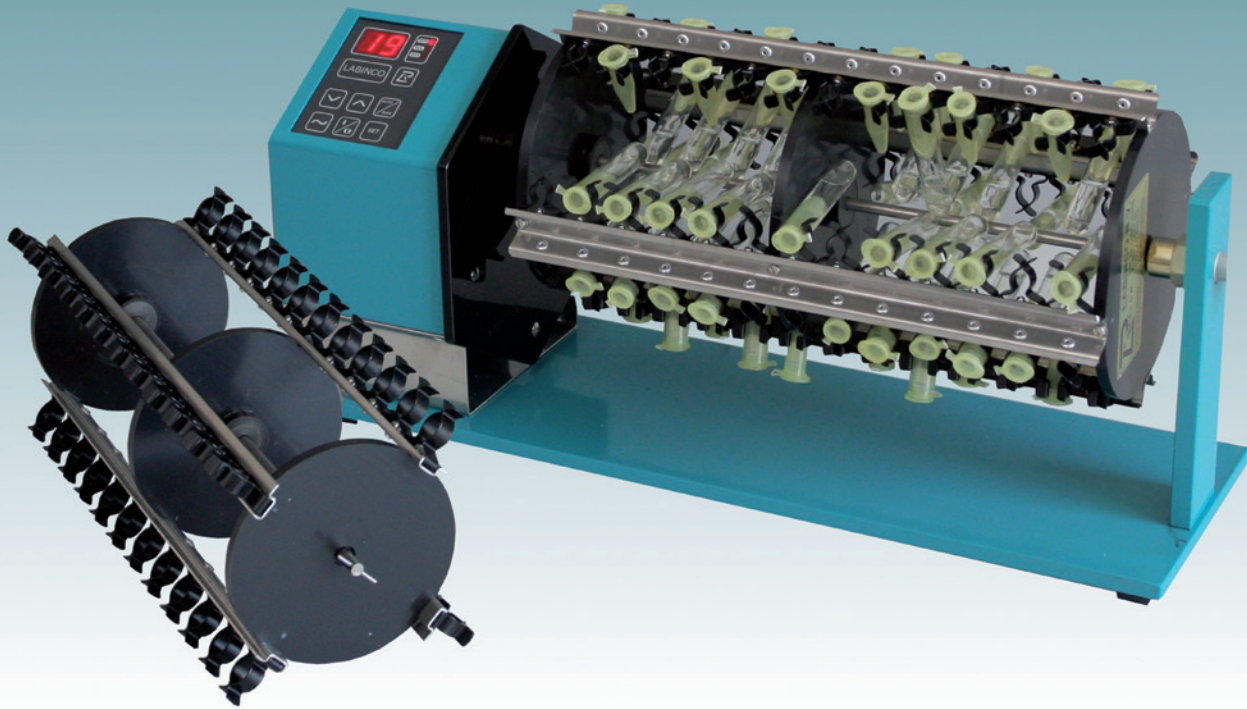
## Electronically controlled stepper-motor provides:

- Digital read-out for - speed 5-50 rpm  
- time 0-99 hrs/1-59 min
- Electronic timer for "auto-stop"
- "Memory-function" for repeated operation.
- "Re-start-function" for continued operation after line-voltage failure including auto-stop
- "Settings saving" available





# Model LD 76 Rotary mixer

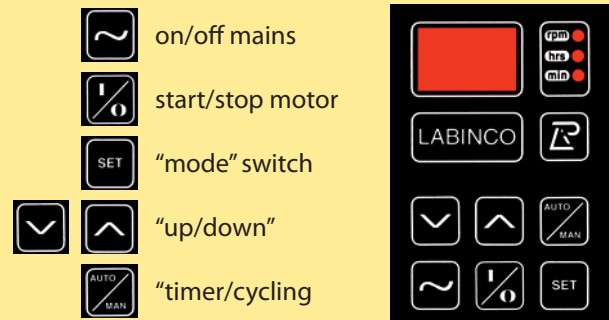


- Provides serial rotation of tubes and mini-tubes for extraction, diffusion, etc.
- Mixing action may be set by speed control 5-50 rpm
- Tube-diameter-range 4-32 mm
- Quick/easy coupling/exchange of rotation drum/bars
- Dual or triple disk support may be carried out
- Tubes may be exchanged while the rotator is running
- Dimensions: 490 x 160 x 205 mm
- Weight 4,5 kg

50/60 Hz Cat.No.: 76000 (230V) / 76010 (115V)

## Electronically controlled stepper-motor provides:

- Digital read-out for - speed 5-50 rpm  
- time 0-99 hrs/1-59 min
- Electronic times for "auto-stop"
- "Memory-function" for repeated operation
- "Re-start-function" for continued operation after line-voltage failure including auto-stop
- "Settings saving" available



Accessories for rotary-mixers				
Bar/Drum outfit	tube $\varnothing$ range mm	cat.no. for L26 and LD-76	max.tube length mm	max no. tubes
	16-20	26020	190	20
	19-22	26022	185	18
	22-27	26027	180	18
	4-6	26036	85	104
	6-9	26039	85	104
	9-12	26040	85	104
 if 4 rows used	12-16	26480	120	48
	if 2 rows used		140	24
 if 2 rows used	9-12	26560	120	56
	if 2 rows used		140	28



### LABINCO B.V.

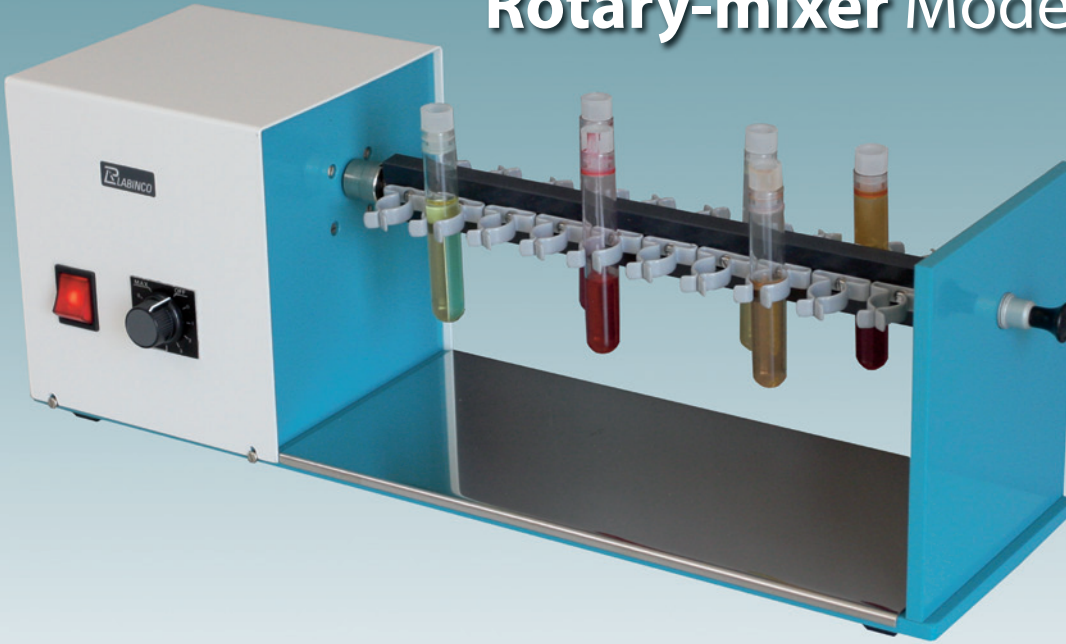
P.O. BOX 3259 - 4800 DG Breda, The Netherlands

Zinkstraat 64 - 4823 AC Breda, The Netherlands

Tel.: 0031(0)76 - 5417582, Fax: 0031(0)76 - 5420173

E-mail: info@labinco-bv.com - Internet: www.labinco-bv.com

# Rotary-mixer Model L26

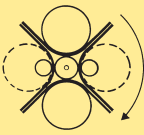

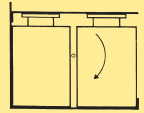



50/60 Hz Cat.No.: 26000 (230V) / 26010 (115V)

- Provides serial rotation of test-tubes
- With diameter-range: 8 to 27 mm
- All aluminum construction
- Speed: stepless controllable: 5 to 50 rpm
- Quick coupling / exchange of rotating drum / bar
- Provided with stainless-steel drip-tray
- Delivered with bar for 20 tubes (14-18 mm)
- Dimensions: 540 x 160 x 185 mm Weight: 7,5 kg

# Large Rotary-mixer Model - L27

## Special / large accessories

	CATALOG NO: 27304 BOTTLE ROLLING ACCESSORY For rolling two or four bottles of max length 300 mm Diameter range 25 to 120 mm
	CATALOG NO: 27312 HYBRIDISATION ACCESSORY For rolling maximum 12 hybridisation-bottles Diam. 35 mm Length 300 mm
	CATALOG NO: 27400 BOTTLE ACCESSORY FOR TOP-OVER-BOTTOM-TURNING of bottles. Diam. range: 25-125 mm Length range: 60-170 mm
	CATALOG NO: 27580 EXTRACTION ACCESSORY For measuring flasks Max. 18 flasks 50 ml.

50/60 Hz Cat.No.: 27000 (230V) / 27010 (115V)

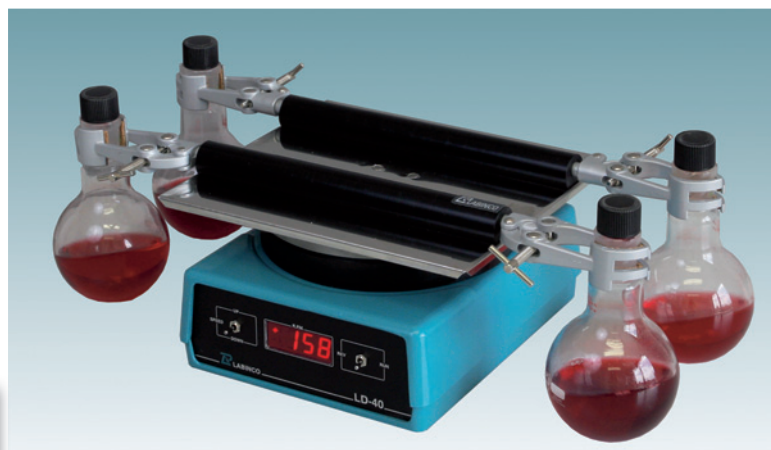
- Same as model L26 but 50 mm higher and with timer and stronger motor Weight: 8 kg
- Provides rotation action for up to 310 mm diameter accessories



# Vibro Shakers

## Digital or analog

- Rotary shaking-action
  - 50-999 rpm
  - 4 mm amplitude
- Gentle shaking-action for culture and staining
- On request available in 115 V/60 Hz



### Flask-shaker Model LD-421

Complete with attachment for 4 flasks up to 500 ml each

- Dimensions: (lxbxh) 420 x 250 x 140 mm
- Weight 5,9 kg

Ordering: digital: LD-42100  
230V / 50Hz. analog: L-42100



### General shaker Model LD-427

With platform 200 x 400 mm. complete with rubber non-slip layer

- Dimensions: (lxbxh) 420 x 250 x 140 mm
- Weight 4,7 kg

Ordering: digital: LD-42700  
230V / 50Hz. analog: L-42700



### Erlenmeyer-shaker Model LD-423

Complete with attachment for erlenmeyers up to 500 ml

- Dimensions: (lxbxh) 230 x 250 x 225 mm
- Weight 5,0 kg

Ordering: digital: LD-42300  
230V / 50Hz. analog: L-42300



### Test-tube shaker Model LD-420

Complete with attachment for 4 ethene holders for test-tubes (holders are not included)

- Dimensions: (lxbxh) 230 x 250 x 175 mm
- Weight 4,5 kg

Ordering 230V / 50Hz.:  
digital: LD-42000  
analog: L-42000

#### Trays for Test-tubes (Ethylene)

Cat. no.	No. tubes	Diam. mm	Cat. no.	No. tubes	Diam. mm
42008	4x32	7-9	42018	4x15	16-20
42010	4x32	9-12	42020	4x15	19-22
42012	4x32	12-16	42024	4x8	22-29
42014	4x24	13-15	42028	4x8	26-30
42016	4x24	15-17	42032	4x8	30-34



#### LABINCO B.V.

P.O. BOX 3259 - 4800 DG Breda, The Netherlands

Zinkstraat 64 - 4823 AC Breda, The Netherlands

Tel.: 0031(0)76 - 5417582, Fax: 0031(0)76 - 5420173

E-mail: info@labinco-bv.com - Internet: www.labinco-bv.com

# Micro-Plate shakers

## Digital or analog

- Rotary shaking-action
  - 50-1250 rpm
  - 4 mm amplitude



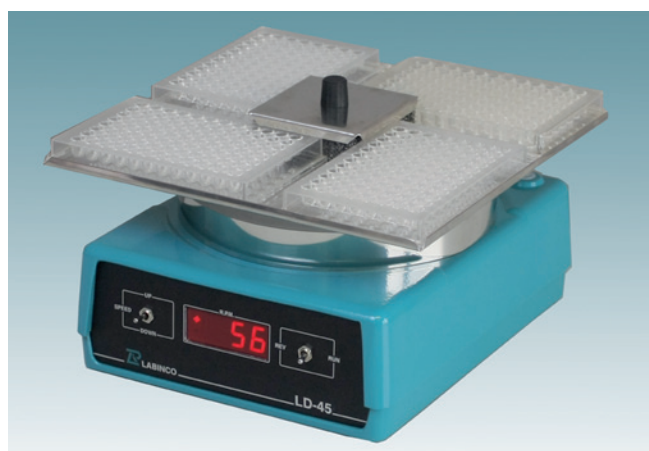
### Cell-Well-shaker Model LD-453

Complete with holder for easy adaption of 4 covered multi-well-plates

- Dimensions: (lxbxh) 230 x 250 x 150 mm
- Weight 4,7 kg

Ordering LD-453  
230V 50/60Hz. 45300  
115V 50/60Hz. 45310

# Micro-Titre-Plate shakers

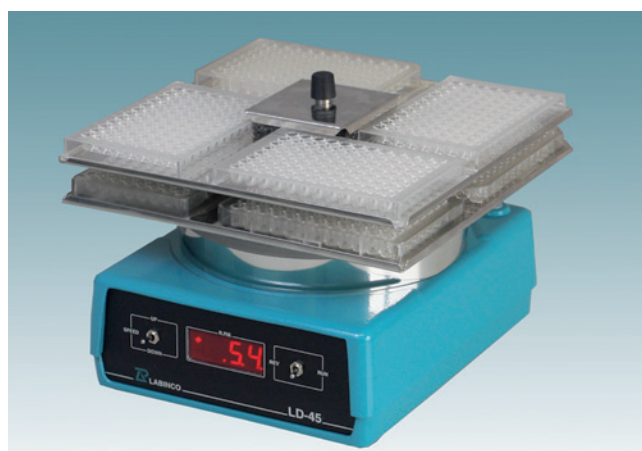


### Model LD-450

Complete with with holder for the adaption of 4 micro-plates

- Dimensions: (lxbxh) 230 x 250 x 150 mm
- Weight 4,5 kg

Ordering: 230V 50/60Hz. 45000  
LD-450. 115V 50/60Hz. 45010



### Model LD-452

Complete with with holder for the adaption of 8 micro-plates

- Dimensions: (lxbxh) 230 x 250 x 175 mm
- Weight 4,7 kg

Ordering: 230V 50/60Hz. 45200  
LD-452. 115V 50/60Hz. 45210



### Reaction-vial shaker Model LD-454

Complete with holder and 4 trays for shaking 4 x 20 eppendorf tubes (1,5 ml.) (Foamholders are not included)

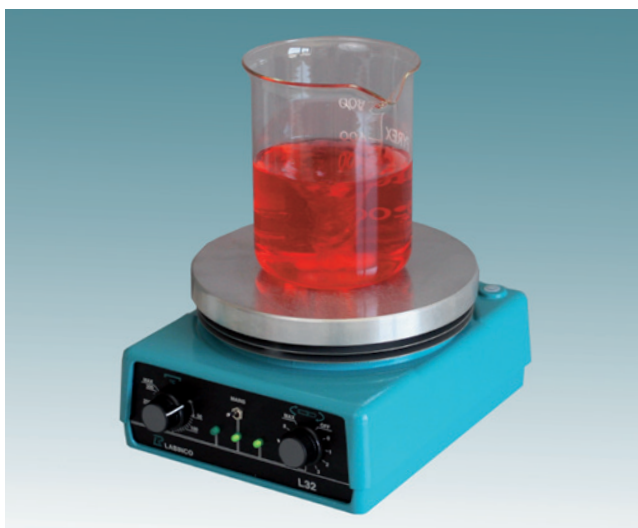
- Dimensions: (lxbxh) 230 x 250 x 175 mm
- Weight 4,5 kg

Ordering 230V 50/60Hz. 45400  
LD-454 115V 50/60Hz. 45410

### Polythene trays (4 pack)

Cat.No.	Tube Diam.	Volume
45420	9-12 mm	1,5 ml
45421	7-9 mm	0,5 ml
45422	4-6 mm	0,4 ml

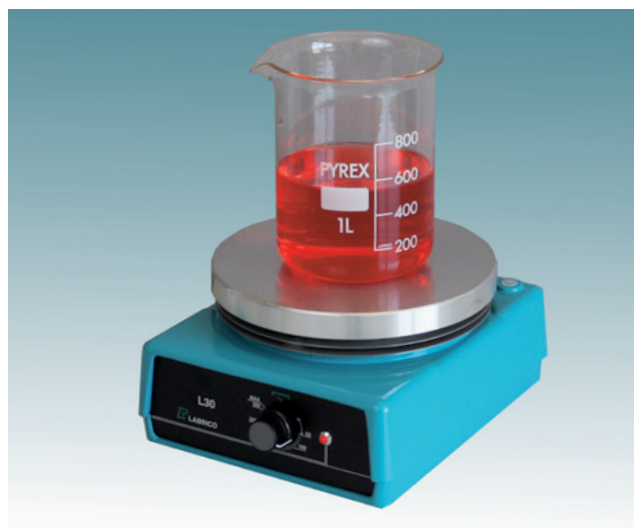
# Hotplates and hotplate-stirrers



## Stirring hotplate

Model L-32 Cat. No. 32000

Speed: 50-1100	Cap. 10 liters
Hotplate: Aluminum 195 mm. diam.	
Thermostatic controlled 50-320°C	
Weigth: 4,2 kg.	Heating: 600 W
Dimensions: 200 x 250 x 135 mm.	
L-33 (33000) Thermal stirrer with relais	
Cat. no. 32010 / 33010 for 115 V	



## Hotplate

Model L-30 Cat. No. 30000

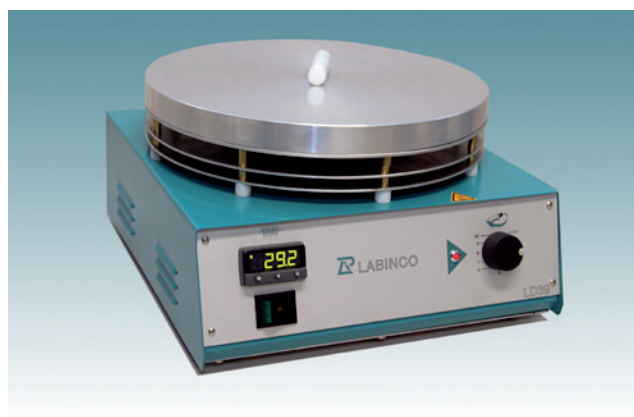
With Stainless Steel efficient reflectors	
Hotplate: Aluminum 195 mm diam.	
Thermostatic controlled 50-320°C	
Weigth: 3,8 kg.	Heating: 600 W
Dimensions: 200 x 250 x 135 mm.	
Cat. no. 30010 for 115 V	



## Large hotplate

Model L-31 Cat. No. 31000

Heating: 2000 Watt	Energy Control: 5-100%
Hotplate: Aluminum	Temperature up to 350°C
With: Heat reflectors	With ventilated housing
Hotplate: Rectangular 460 x 350 mm (w x d)	
Available on 230 V 50/60 Hz (115V, cat.no. 31010 on request	
Weigth: 9,1 kg.	Dimensions: 470 x 370 x 145 mm (lxdxh)



## Large hotplate stirrer

Model LD-39 Cat. No. 39000

Heating 2000 Watt	Digital temperature controller 30-450°C
U-shaped magnet	Speed-control 50-1000 rpm
Capacity: 35 liters	Hotplate: circular, 300 mm diameter, aluminum
With relais for external liquid temperature control	
Weigth: 9,1 kg.	Dimensions: 320 x 340 x 155 mm (lxdxh)



### LABINCO B.V.

P.O. BOX 3259 - 4800 DG Breda, The Netherlands

Zinkstraat 64 - 4823 AC Breda, The Netherlands

Tel.: 0031(0)76 - 5417582, Fax: 0031(0)76 - 5420173

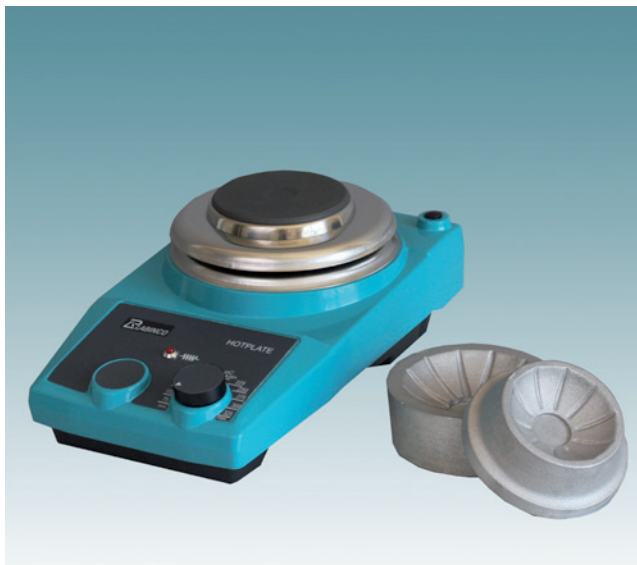
E-mail: info@labinco-bv.com - Internet: www.labinco-bv.com

# Multi Flask heater



## Flask heater multiposition

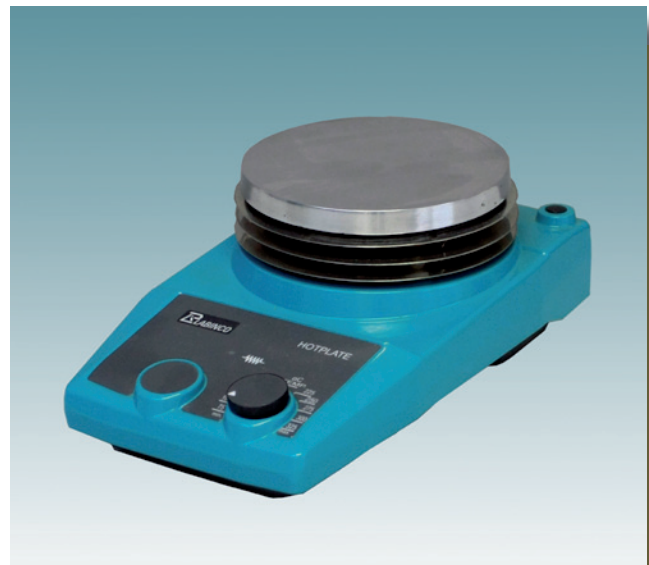
Hotplate: 140 mm	Heating: 450 W
Controlled 50 - 450°C	
Aluminum holders for 100 - 250 ml. 36010	
Aluminum holders for 500 - 1000 ml. 36020	
Weight 4 position unit (230V) 6,5 kg	Cat. No. 36400/4x450 W
Weight 6 position unit (230V) 11 kg	Cat. No. 36600/6x450 W



## Flask heater

Model L-36 Cat No. 36000

Hotplate: 140 mm	Heating: 450 W
Controlled 50 - 450°C	Weight: 1,8 kg.
Aluminum holders for 100 - 250 ml. 36010	
Aluminum holders for 500 - 1000 ml. 36020	
Single unit (230V)	Cat. No. 36000



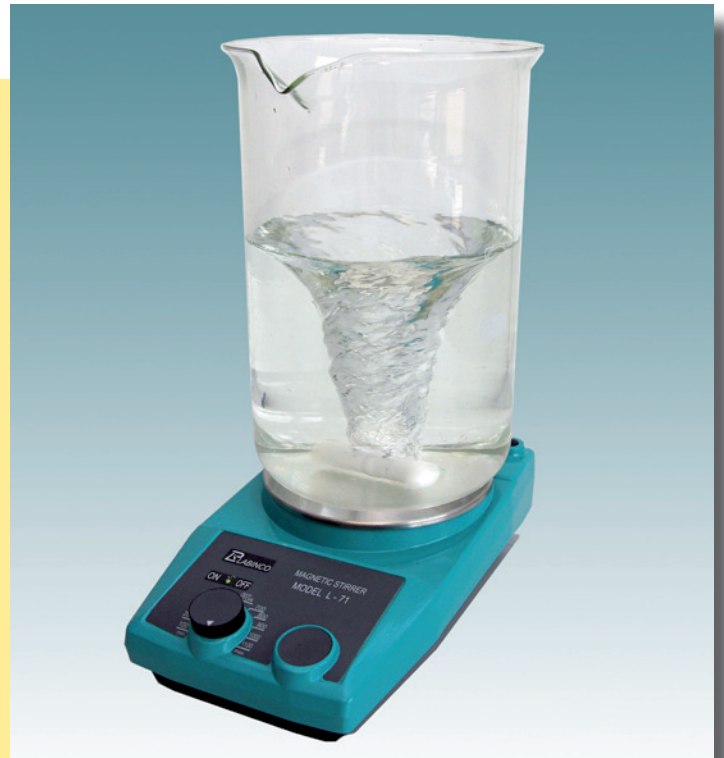
## Hotplate

Model L-80 Cat No. 80000

With Stainless Steel efficient reflectors	
Hotplate: Aluminum 145 mm diam.	
Thermostatic controlled 50-320°C	
Weight: 2 kg.	Heating: 600 W
Dimensions: 172 x 286 x 125 mm.	
Cat. no. 80010 for 115 V	

# Magnetic Stirrers

Model	Model L-71	Model L-73
Cat. number	71000	73000
Description	Economy Magnetic Stirrer	Large Capacity Magnetic Stirrer
Stirring surface	155 mm diam. Stainless Steel	
Stirring capacity	5 ltr.	20 ltr.
Motor rating	22/2,2 W	13/5 W
Speed range	100-1250 rpm	
Weight	2,2 kg	
Dimensions (wxdxh)	172 x 286 x 80 mm	
Permissible ambient	5 - 50° C	
Permissible humidity	90%	
Protection class	IP 42	
Voltage/Frequency	220V/50Hz	



## Model L23 Magnetic-Stirrer

- Electronic speed control
- Speed; 50 - 1100 rpm
- Housing: 2 piece casted aluminum
- Dripwater-spillage proved design and construction
- Electrostatically applied powder coated
- M-10 threaded support rod connection
- Supplied with teflon magnetic stirring bar line cord and manual
- 10 liter capacity stainless steel topplate: 180 mm ø

Model	Cat. number	dimensions (lxdxh)	Weight
LD-23	23000 (230V)	200 x 250 x 90 mm	2,9 kg
	23010 (115V)	200 x 250 x 90 mm	2,9 kg



### LABINCO B.V.

P.O. BOX 3259 - 4800 DG Breda, The Netherlands

Zinkstraat 64 - 4823 AC Breda, The Netherlands

Tel.: 0031(0)76 - 5417582, Fax: 0031(0)76 - 5420173

E-mail: info@labinco-bv.com - Internet: www.labinco-bv.com

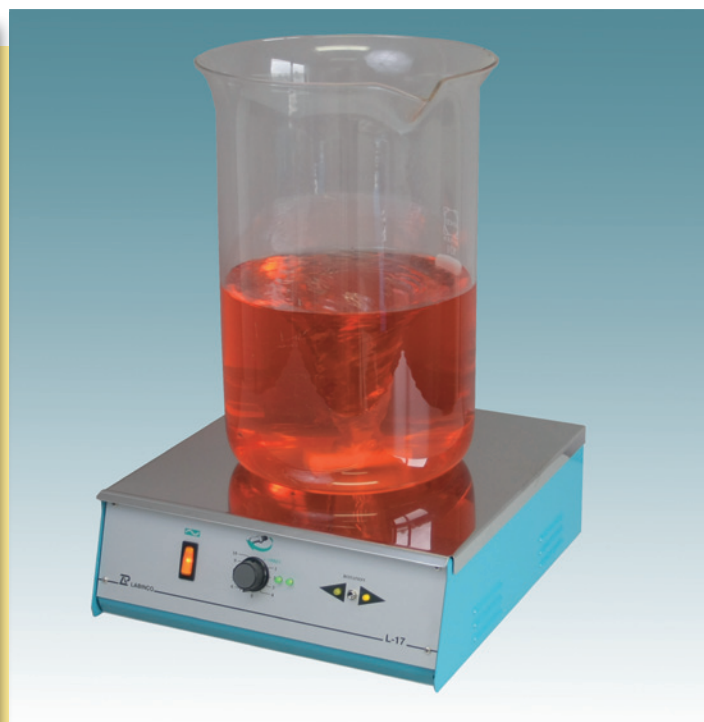
# Magnetic Stirrers



## Model L22 LUM-Stirrer

- Opal polycarbonate topplate, 160 mm, diam.
- Two gas-discharge tubes for liquid illumination
- Electronic speed control
- M-10 threaded support ROD connection
- 230 V 50 Hz only

Available	Cat. number
Single-position	22000
4 position - unit	22400



## Large Stirrer 35 liter

- Optical speed-detection
- Reversible stirring
- Topplate st.st.
- Micro-processor controlled

Model	Cat. number	mode	dimensions (lxdxh)	Weight
LD-14	14000	digital	320 x 340 x 105 mm	5,2 kg
L-17	17000	not digital	320 x 340 x 105 mm	5,2 kg



# Multi-position-magnetic-stirring-systems



The "Labinco" Models L-714/744/716/746/ is a 4 or 6 position instrument that provides stirring in beaker glasses, erlenmeyers or other suitable containers.

- Stainless steel topplate
- Stirring speed is stepless controlled between 0-1200 rpm (clockwise/anti-clockwise)

<b>Specifications; 230 Volt</b>	4 pos. =100 Watt	6 pos. =150 Watt	50/60Hz	(other lines on request)
	<b>BENCH-MODELS L-714 / 716</b>			
<b>Dimensions ; (L x W x H)</b>	L-714= 545 x 245 x 155 mm (weight 8 kg)		cat.no: 71400	
	L-716= 845 x 245 x 155 mm (weight 12 Kg)		cat.no: 71600	
	<b>SQUARE-MODELS L-744 / 746</b>			
	L-744= 355 x 400 x 255 mm (weight 8 Kg)		cat.no: 74400	
	L-746= 505 x 400 x 255 mm (weight 12Kg)		cat.no: 74600	



## LABINCO B.V.

P.O. BOX 3259 - 4800 DG Breda, The Netherlands

Zinkstraat 64 - 4823 AC Breda, The Netherlands

Tel.: 0031(0)76 - 5417582, Fax: 0031(0)76 - 5420173

E-mail: info@labinco-bv.com - Internet: www.labinco-bv.com

# Multi-position-hotplate-magnetic-stirring-systems



The "LABINCO" Models LD-814/844/816/846 is a 4 or 6 position instrument that provides separate or simultaneous heating and stirring in beaker glasses, erlenmeyers or other suitable containers.

- Stainless steel hotplates  $\varnothing$  120 mm
- With digital temperature controller up to 420 C°
- Stirring speed is stepless controlled between 50-1200 rpm



<b>Specification; 230 Volt</b>	4 pos. = 1300 watt	6 pos. = 1950 watt	50/60 Hz
	<b>BENCH-MODELS Ld-814/816</b>		
<b>Dimensions; (L x W x H)</b>	Ld-814 = 545 x 245 x 155 mm (weight 10 kg)	cat.no:81400	
	Ld-816 = 845 x 245 x 155 mm (weight 14 kg)	cat.no:81600	
	<b>SQUARE-MODELS LD-844/846</b>		
	Ld-844 = 355 x 400 x 255 (weight 10 kg)	cat.no:84400	
	Ld-846 = 505 x 400 x 255 (weight 14 Kg)	cat.no:84600	